

Unitech Enterprises Limited Information

Magazine#2 | 2024



**PAPUA NEW GUINEA
UNIVERSITY OF TECHNOLOGY**

The business arm of the Papua New Guinea University
of Technology





Dear reader



Welcome to the 2nd edition of the UEL Mini-Magazine.

The 1st edition came out last year during the PNG Mining & Petroleum Conference and Expo 2023 hosted here at the Papua New Guinea University of Technology Campus, which was a success.

In this 2nd edition, you will read about an important research undertaken by one of our senior chemists, John Ape on the bore water supply here in Lae City. This research which formed part of his Masters of Science thesis is an important contribution to the Government Authorities and the Communities.

The Laboratory through National Analytical & Testing Services continues to play a vital role in the Country by offering high-quality testing, analysis, research and consultancy services. We aim to support innovation, ensure product quality and safety, and contribute to public health and environmental protection and support the Country's development agendas.

Also there are other interesting training and consultancy services that are available through the Unitech Development & Consultancy (UDC) that the industries and government can benefit from. The UDC draws from the thirteen academic departments and the professors and doctors at the University to provide short training and consultancy services.

During the last six months there have been some movements in our staff and we acknowledge the outgoing staff for their services welcome the new staff and also congratulate those that got their well-deserved promotions.

- **Mr. Vincent Koddy**
Manager & Chief Chemist, National Analytical & Testing Services – Retired
- **Mrs. Miriam Songi**
Senior Training Coordinator, Unitech Development & Consultancy – Retired
- **Mr. Andrew Hombo**
Manager & Chief Chemist, National Analytical & Testing Services – Promoted
- **Mr. John Ape**
Senior Chemist, QA/QC, National Analytical & Testing Services – Promoted
- **Ms. Karen Solien** Manager, U-Shop – Promoted
- **Mr. Jebson Kare**
General Accountant, Unitech Enterprises Limited – Recruited
- **Mr. Hubert Kewali** Chef Manager, Unitech Guest House – Recruited
- **Kuma Accountants & Advisors** Taxation and Corporate Business Advisory Services, Unitech Enterprises Limited – Appointed
- **Mss Glenda Holee** 4th year Bachelor in Communication for Development Studies

The UEL, guided by its Strategic Corporate Plan 2023 - 2026 will embark on the following new projects.

- **UEL Complex:** This will be the UEL Corporate Office and also house the new and bigger U-shop, Post Office, UEL Hire Cars and the UEL Travel Agency.
- **UEL Estates:** The UEL will start on the development of the 28 allotments at Tent City and offer the houses to the University Staff for purchase.
- **UEL – Post PNG Partnership:** For the benefit of the University and the surrounding communities, The UEL and Post PNG Limited are negotiating for possible partnership to develop post office and associated postal services carried by the Post PNG.
- **NATS Stat-of-the-Art Laboratory Building:** The design and costing for the proposed new laboratory has been completed and a proposal for funding from various tax credit financing has been submitted.
- **Operations of the Unitech Student Mess:** The UEL oversees the management of the operations of Student Mess in 2024 and fully operate the new mess facility starting January 2025.
- **The Unitech Guest House Catering Services:** Starting in March 2024, the Unitech Guest House is now serving restaurant style menus catering for functions and events at the campus.

I take this opportunity to thank all our customers/clients who continue to believe in us and the services we provide. I also thank the university administration, the staff and the students, our suppliers, our employees and not forgetting our stakeholders in the community for their continued support.

If you are new client, have a look at the services we provide and contact us for the services and products you require.

Tenki-u tru!

William Kep
General Manager - Unitech Enterprises Limited



Unitech Graduation Day 56th

5th April 2024

CONGRATULATIONS

Your real world life has just began.



“Unitech Enterprises Limited group would like to congratulate all the **Unitech Graduates for their success**, and we wish them the best in their future career path.”



**UEL
Catering
Services**

Pg.4

ECO MICS 2023 Rugby Football League GRANDFINALIST.

Page: **19**



Content

pages

The Company: Unitech Enterprises Limited	01-03
UEL Catering Services	04-05
Accounting Fundamentals for Non-Accountants	07
Why MATLAB?	08
Postgraduate Program	11-12
John Ape's Theses Extract	15
National Analytical & Testing Services (NATS)	16-17
13 Academic Departments collaborating with UDC	18

The Unitech Rainforest Habitat

Pg. 13



www.uel.com.pg

Printed by: Unitech Printing
Private Mail Bag, Lae, Papua New Guinea
Ph: +675 473 4275 salesenquiries@print.unitech.ac.pg

Layout Design by: Simple Effects Multimedia
Ph: +675 732 43419 | rodnejofangke@gmail.com

Produced by: Unitech Enterprises Limited
Private Mail Bag, Lae, Papua New Guinea
Ph: +675 473 4244 info@uel.com.pg
Call us now and book your space on our next edition..



The Company

Unitech Enterprises Limited..

Incorporated in 2019, Unitech Enterprises Limited (UEL) is the business arm of Papua New Guinea University of Technology, which aim to support the industries, the government and the communities in Papua New Guinea.

Our Vision

Efficient operational excellence for sustainable growth in all businesses we operate to financially support the Papua New Guinea University of Technology in the twenty-first century.

Our Mission

To explore business opportunities, consistently investing and improving our work standards by up-skilling our employees, upgrading our facilities to ensure excellence customer service.

Our Value

We stand for honesty in our duties, commitment to our culture of excellence with integrity for delivering outstanding products and services to our customers.

We create a safe and conducive working environment where each voice is heard and valued.

UEL group comprises of Unitech Development & Consultancy (UDC), National Analytical & Testing Services (NATS), the UEL Shop at the campus, and now UEL Catering Services looking after operations of the mess at the University. UEL provides general and corporate management services to UDC, NATS, UEL Shop, UEL Catering Services and other new and upcoming business ventures.

R & SONS CONSTRUCTIONS LTD

PLANT HIRE & CIVIL ENGINEERING CONTRACTORS

Leading the way

in Civil Construction for over two decades

Established since 1989, R & Sons Constructions Ltd is truly a 100% Papua New Guinea owned company. Having made its way up from humble beginnings it is one of the premier Papua New Guinean Plant Hire & Civil Engineering companies with experience spanning over two decades.

WE SPECIALIZE IN:

- Earthworks
- Road Construction & Maintenance
- Plant and Equipment Hire
- Bitumen Sealing
- Culverts & Bridge Building
- Civil Engineers & Project Managers
- Supplier of Concretes for footpath, building foundation, etc

With a large fleet of Civil Engineering Road Construction Equipment and a host of small equipment with over 150 full time employees **'no job is too big'**

+675 745 1280 | info@rnsons.com.pg | www.rnsons.com.pg



There is something for everyone at the UEL Shop, Unitech Taraka Campus.

BUSINESS UNITS within the UEL Corporate Management.

The UEL Shop

The UEL Shop at the University Campus currently is the only directly control business arm of UEL that provides the cash-flow and the starting point for the UEL Group.

Current Operations of the UEL Shop:

The shop is operated by a 15 staff running two shifts per day, seven days a week.

There is no payroll and accounting system, stock take takes were not done and monthly reports were not prepared. Further no internal controls system is documented and in place. No employee management systems was in place with no standard operating procedures and policies to guide management of the Shop. The UDC Manager was acting as

The current business units that make up UEL Group are profiled as follows.

the shop manager with the inherent risk for abuse and misuse prevalent.

Unitech Development & Consultancy (UDC)

The UDC is long established business arm of the University in coordinating the provision of training and consultancy services to the industry and the greater external market. The UDC also has a portfolio of properties that it manages.

Current Status of Operations of the UDC: Over the years, the UDC has remained stagnant and regressed to a greater extent. Over the last 5 years the UDC has been recorded loses after

loses with the audited financial report only up the 2019.

National Analytical & Testing Services (NATS)

NATS is another long-established business which has enjoyed some of its best days. The need for its biological and chemical testing and analytical services to the industry and government is ever present. The demand NATS's services acerbated by the development in internet space resulting in the world becoming much smaller and the scrutiny on industries and regulation compliance is critical business risk.

• NATSL

National Analytical & Testing Services Limited

▪ Laboratory Testing Services

▪ Chemical Analysis

▪ Biological Analysis

▪ Environmental Analysis

• UDC

Unitech Development & Consultancy Limited

▪ Short courses and consultancy

▪ Centre for Entrepreneurship and Innovations

▪ Property Management Services

• UEL CATERING

Unitech Enterprises Limited Catering Services

▪ Large Scale Project Catering

▪ Mess Management

▪ Functions Catering





■ Cooks of UEL Catering Services preparing meal for the students at the mess.

New Business Opportunities to be pursued.

UEL Hire Cars

This opportunity for hire cars is to hire out cars to the University and staff only. Currently the University is forced to hire from external hire car companies. A detailed operational and financial proposal will be prepared and presented to the Board (in 2024) for its consideration.

UEL Travel Agency

This is another service that is lacking at the Campus and this part of the city. Currently all travelling agencies and Air Niugini and PNG Air offices are good 30 minutes' drive to town. UEL will investigate the statutory requirements and feasibility of the UEL Travel Agency and present a detail submission to Board (in 2024) for its deliberations

UEL Banking Agency

Again, with distance from the nearest bank and Automatic Telling Machines, the need for banking services to is a necessity. With our 3,000 student population and the campus with the K1.2 million payroll every fortnight, the need for banking services is amplified. UEL will investigate the possibilities the banking set up either a full fledge branch and agency and go into partnership with one of the major banks in the Country.

UEL Complex

The UEL does not have a current office and there is a need to expand shopping center in the Campus. The UEL complex is proposed within the campus to house a mini super market, a travel agency, a banking agency and a restaurant. A Detailed business plan with design is to be prepared and presented to the Board in the 2024 financial year.

UEL Construction and Maintenance

The University will be embarking a major construction project in the next 2 years and thus the establishment of the UEL Construction and Maintenance division. Further the inefficiency and ineffectiveness in the current set up of the maintenance department also warrants the move to incorporate this important service at the University Campus.

UEL Post Office

UEL under Joint Venture Partnership Program with Post PNG Limited is going to provide a Post Office and associated postal services carried by the Post PNG Limited.

U-Shop Mart

A new and bigger shopping mart will be built within the campus to serve better the students and the campus communities. The large shopping mart will also have a restaurant, a pizza oven, coffee shop, and an ice-cream parlor. This new shopping mart will be housed in the proposed UEL Complex.

The UEL management has written a request to the University's Propriety Planning Committee allocated a suitable land – preferably with current U-Shop and the new mess building. Draft designs and costings have already been compiled.

UEL Estates Development

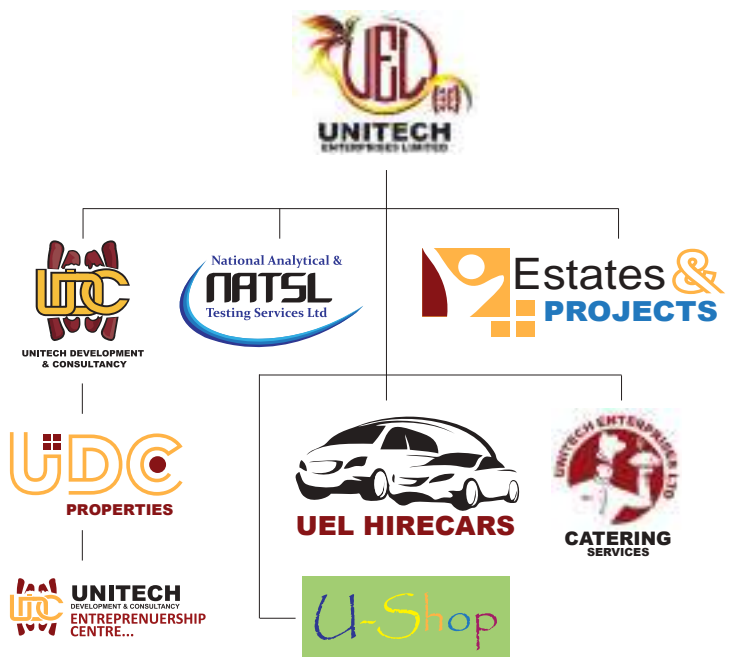
Development of 28 allotments at the Tent City area is paramount. The allotments will be surveyed, fenced off with services connected and houses will be built there for sale to the University staff (first preference) and outside public.

UEL Security Services

Security services is another opportunity that will be looked at as result of the ineffective management and operations of the current security department of the University. More investigation and detailed analysis will be done this year 2024-2025.

UEL Janitorial Services

Currently the University is engaging contractors to come and do proper cleaning and pest control works. Janitorial services rounds of the messing and maintenance services is tendered and UEL to prepare its tender proposal for this work.



■ Unitech Enterprises Limited Business Structure





Chef's

CORNER..

BUTTER CHICKEN

PREPARATION TIME 20 MINUTES (PLUS MARINATING TIME)
COOKING TIME 30 MINUTES

- 1.5kg chicken thigh filets, halved
- 4 cloves garlic, crushed
- 2 teaspoons garam masala
- 2 teaspoons ground coriander
- 2 teaspoons ground cumin
- 1/2 teaspoons chilli powder
- 2 teaspoons sweet paprika
- 1/2 cup (140g) yogurt
- 60g butter, chopped
- 2 tablespoons white vinegar
- 2 tablespoons tomato paste
- 410g can tomato puree
- 3/4 cup (180ml) chicken stock
- 5 cardamom pods, bruised
- 1 cinnamon stick
- 300ml cream
- 1/2 cup coarsely chopped fresh coriander

1. Combine chicken, garlic, spices and yogurt in a large bowl, cover, refrigerate 3 hours or overnight
2. Melt butter in a large saucepan; cook chicken medium, stirring, about 10 minutes or until chicken browns lightly. Add vinegar, paste, puree, stock, cardamom and cinnamon; bring to a boil. Reduce heat; simmer, uncovered, stirring occasionally, about 30 minutes or until chicken is cooked through. Add cream; stir until heated through. Stir in coriander.

serves 8

per serving 33g fat; 2199kJ (526 cal)

Tip Make this recipe a day ahead to let the curry flavor develop; refrigerate, covered, until ready to reheat and serve.

serving suggestion Serve chicken with saffron rice and chapatis, if desired.

UEL Catering Services..



*A*s a strategic direction by the management of the University, the Unitech is now managing the mess in house through the Unitech Catering Services.

The Catering currently is serving 6,000 meals on a daily basis; that is breakfast, lunch and dinner to the Unitech Students.

This important service at the University is under the management of Unitech Enterprises Limited ("UEL") as "UEL Catering Services", this year 2024.

As UEL Catering Services, we would like explore opportunities in the town catering services to large gathering, conferences, weddings parties, corporate parties and others in and around Lae City.

UEL Catering Services is staffed by well experienced chef and kitchen staff (70) who have a combined experience of well over 100 years, spanning careers in the resources project sites and the hospitality industry.

UEL Catering is also looking out for joint venture partnerships with land owner companies ("Landco") to explore opportunities in the mining and petroleum project sites around the country.



We Deliver...

CATERING SERVICES

- Large Scale Project Catering
- Mess Management
- Functions Catering

Call/visit us for all your catering needs...

7186 5937 / 473 4246 | catering@uel.com.pg | www.uel.com.pg



A part of UEL Group

Unitech Guest House

your home away from home

Weekly Menu

CATALOGUE



Healthy Food, Happy People.

Breakfast

MONDAY
Baked Beans
Scrambled Eggs



PGK
25.00

Lunch

MONDAY
Braised Steak & Onions
Fried Rice
Steamed vegies



PGK
35.00

TUESDAY Boiled Eggs Spaghetitis	WEDNESDAY Bacon rashes Poach eggs	THURSDAY Frank Forts Baked Beans	FRIDAY Omelets Egg Benedict
--	--	---	--

SATURDAY Scrambled eggs Frank Forts	SUNDAY Bacon Rashes Omelets	■ Garlic Bread French Toast P/Butter Jam Meadowlea Milk Milo Coffee Tea	
--	--	---	--

TUESDAY Soft hen fried chicken Paprika potato Coleslaw	WEDNESDAY Tempera fried Fish fillet French Fries Chips Garden salad	THURSDAY Beef & vegetable stew Coconut steamed Rice Coleslaw
--	---	--

FRIDAY Hawaiian Pizza French Fries Chips Stir fry vegies	SATURDAY Spaghetti Bolognaise Pillar Rice Toss salad	SUNDAY Thai coconut Curry chicken Fried rice Steamed vegies
---	---	--

■ Entree | Starch | Vegetables

TUESDAY Braised lamb Chops Fried potato Wedges Steamed vegies	WEDNESDAY Grilled steak/ Mustard sauce Oven baked Potatoes Toss salads	THURSDAY Traditional chicken creamed Legs Traditional creamed Taro, Banana Steamed vegies
---	--	---

FRIDAY Curry Lamb Casserole Plain steamed Rice Stir fry vegies	SATURDAY Grilled pepper Pork chops Parsley potatoes Coleslaw	SUNDAY Chicken Balmy Goreng Coconut cream Rice Garden salad
--	---	--

■ Entree | Starch | Vegetables

Dinner

MONDAY
Traditional bake
Spare Ribs
Parsley Potatoes
Stir fry vegies



PGK
45.00

Place your order a day in advance and have a delicious taste of our menu

Call us on: 7055 6090 | joseph.boi@uel.com.pg | www.uel.com.pg

Accounting Fundamentals *for* Non-Accountants

Elevate your understanding of accounting with Mathew Kuusa and unlock a world of opportunities for personal and organizational advancement. ”

Embark on an enlightening journey into the realm of accounting with Mathew Kuusa, a distinguished expert in the field.

As the Head of Accounting at PNG University of Technology, Mr. Kuusa's specialized training program on Accounting for Non-Accountants offers a unique opportunity for interested clients, organizations, and industries to empower themselves with essential accounting knowledge.

With a wealth of practical experience and a proven track record of delivering insightful short courses to a diverse range of industries and organizations, such as Trukai Industries. Mr. Kuusa brings real-world examples and practical insights to enrich participants' understanding of accounting concepts.

Throughout the program, participants will delve into fundamental accounting principles, including financial statements, budgeting, and financial analysis, acquiring vital skills for professional development.

By the conclusion of the training, participants will possess the essential skills and knowledge to interpret financial data, make informed business decisions, and effectively communicate with accounting professionals. Mr. Kuusa's expertise and interactive teaching style promise an engaging and informative learning experience, equipping participants with valuable accounting skills to enhance their professional growth and success.

Course Objectives:

1. Understand fundamental accounting principles, terminology, and concepts.
2. Interpret and analyze financial statements, including balance sheets, income statements, and

Mathew Kuusa

Head of Accounting,
Dept of Business
Studies at PNG
University of
Technology.



cash flow statements.

3. Learn how to budget, forecast, and track financial performance using accounting tools and techniques.

4. Develop skills in financial analysis, ratio analysis, and trend analysis to evaluate the financial health and performance of an organization.

5. Gain knowledge of cost accounting, budgeting, variance analysis, and cost management practices.

6. Explore internal controls, financial reporting requirements, and compliance guidelines to ensure transparency and accountability in financial management.

Teaching Methodology:

- Interactive lectures and presentations
- Group discussions and case studies
- Practical examples and exercises
- Hands-on accounting software training
- Q&A sessions and quizzes

Target Audience:

- Professionals from non-accounting backgrounds
- Managers and executives involved in financial decision-making
- Small business owners and entrepreneurs
- Individuals seeking to enhance their financial literacy skills

Certification:

Participants who successfully complete the Accounting Fundamentals for Non-Accountants training course will receive a certificate of completion.

UDC

Property Valuation Service

Your Trusted Partner in Real Estate Valuation



UDC-Property Valuation Service is a real estate valuation business specializing in providing accurate and comprehensive property valuation reports to clients across various sectors. With a team of highly skilled and experienced valuation experts, UDC-Property Valuation Service is dedicated to delivering reliable and professional valuation services tailored to meet the specific needs of each client.

• **Residential Property Valuation:** UDC-Property Valuation Service offers detailed and precise valuations for residential properties, including single-family homes, condominiums, townhouses, and multi-family dwellings. Our valuation reports take into account various factors such as market trends, location, condition, and comparable property sales data.

• **Commercial Property Valuation:** UDC-Property Valuation Service provides expert valuations for commercial properties, including office buildings, retail spaces, industrial facilities, and investment properties. Our valuation experts analyze market conditions, rental income potential, property improvements, and other relevant factors to deliver accurate and insightful valuation reports.

• **Land Valuation:** UDC-Property Valuation Service offers land valuation services for vacant land, development sites, agricultural properties, and other land parcels. Our valuation experts assess factors such as zoning regulations, land use potential, infrastructure availability, and market demand to provide clients with comprehensive and reliable land valuation reports.

• **Rental Valuation:** UDC-Property Valuation Service conducts rental valuations for residential and commercial properties to help landlords, property owners, and tenants determine fair rental rates. Our valuation experts consider factors such as property location, size, condition, amenities, and market demand to provide accurate and up-to-date rental valuation reports.

• **Insurance Valuation:** UDC-Property Valuation Service offers insurance valuation services to assist property owners and insurance companies in determining the appropriate replacement cost or insurable value of properties. Our valuation experts conduct detailed assessments of property features, construction materials, building codes, and other factors to ensure accurate insurance valuation reports.

At UDC-Property Valuation Service, we are committed to providing our clients with reliable, thorough, and professional valuation services that enable them to make informed decisions regarding their real estate investments. With our expertise and dedication to excellence, we aim to be the trusted valuation partner for clients seeking comprehensive and accurate property valuation solutions.



call us now on
+675 7055 6090
info@uel.com.pg
www.uel.com.pg



A part of UEL group

Why MATLAB?



MATLAB is not just a software – it is a gateway to innovation and problem-solving. Whether you're an aspiring mathematician, computer scientist, engineer, or researcher, MATLAB empowers you to analyze data, develop algorithms, create models, and visualize concepts with unparalleled efficiency.



Dr. Mohsen Aghaeiboorkheili brings a wealth of knowledge and experience, having spearheaded ground-breaking research in both academia and industry.

His expertise in MATLAB and its applications make him the perfect guide to unravel its potential and guide you toward excellence.

■ Our current working client is the Bank of Papua New Guinea (PNGBC). We have been providing them with necessary educational knowledge and technical skills for the last 4 years.

The Basic

The lessons are intended to make you familiar with the basic facilities of MATLAB.

MATLAB is a programming and numeric computing platform used by millions of engineers and scientists to analyze data, develop algorithms, and create models.

MATLAB combines a desktop environment tuned for iterative analysis and design processes with a programming language that expresses matrix and array mathematics directly.

It includes the Live Editor for creating scripts that combine code, output, and formatted text in an executable notebook.



“MATLAB is a gateway to innovation and problem-solving”. Whether you're an aspiring mathematician, computer scientist, engineer, or researcher, **MATLAB empowers you to analyze data, develop algorithms, create models, and visualize concepts with unparalleled efficiency.**

By participating in this workshop, you will:



- Gain hands-on experience in MATLAB from the industry's best.
- Master the fundamentals of Programming, Data Analysis, and Visualization.
- Uncover advanced techniques for Mathematical Modeling and Simulations.
- Learn how MATLAB can accelerate your research and enhance your projects.
- Network with like-minded peers and professionals in the field.

Limited Seats Available!

Due to the exclusive nature of this workshop, we have limited seats available. Secure your spot now to avoid disappointment!

Workshop Highlights:

- In-depth tutorials by **Dr. Mohsen Aghaeiboorkheili**, a visionary in mathematics and computer science.
- Live coding sessions demonstrating real-world applications.
- Engaging Q&A segments to address your queries directly.
- Case studies showcasing MATLAB's impact on cutting-edge research.
- Certificates of completion endorsed by the Department of Mathematics and Computer Science.





Innovative Solutions | Valued Services

Datec PNG LTD & Data

We wish you all the best - Warmest congratulations

Datec's proactive service-led approach and commitment to our customers has allowed us to build sustainable, long term relationships which are unmatched in the PNG ICT market. We take the time to fully understand our customers' objectives and we deliver tailored solutions and services which enable them to be agile, competitive and fully capable of meeting their business goals.

We address virtually end-to-end ICT requirements of our customers. Below is the summary of the solutions & services sold by Datec:

SOLUTIONS & SERVICES

ICT CONSULTING <ul style="list-style-type: none"> IT Strategic review IT Audits IT Health Checks Solution Design Cyber Security PEN Test, PCI DSS ISO 27001 Info Security Project Management 	INFRASTRUCTURE <ul style="list-style-type: none"> Cabling & Power HCI Server & Storage Virtualisation Comms & Networking CCTV/Access Control Network Security Customised DC, Micro DC Solar Micro power grids 	OFFICE AUTOMATION <ul style="list-style-type: none"> Print/Scan/Copy Document Management Print Management Document Digitization ID Card solutions Digital Duplicators Digital Archiving Queuing Management 	SOFTWARE SOLUTIONS <ul style="list-style-type: none"> Software Development Software Licensing Oracle DBA Services BI/Dashboard Reporting Website/Mobile Apps HR System Asset Management System Internal Audit System
SUPPORT SERVICES <ul style="list-style-type: none"> IT Service Desk IT Systems Break-fix Warranty Services Spare Parts Back-fill Support Managed Services Off-site Backup Storage 	INTERNET & DATACENTER <ul style="list-style-type: none"> Internet-Home/Corporate Metro Area Ethernet Cloud Solutions Hosting/Filtering DR-Physical/Virtual Co-location BCP Suite 	DATEC LEARNING CENTRES <ul style="list-style-type: none"> Academic Programs Corporate Training Professional/Soft Skills Personal Development Pearson/PSI Testing Center eLearning/Online-Live PMI/Scrum/ITIL Training 	RETAIL SHOP <ul style="list-style-type: none"> PCs, Laptops, Tablets Printers, Scanners, POS Antivirus, Adobe Suite Mobile Phones/Topup cards Smart watches/Cameras Consumables/Accessories AV & Commercial Display

Datec's technological superiority and international partnerships have successfully integrated PNG with rest of the world by providing state-of-the-art ICT Solutions for over 35 years.

our partners

datec Learning Centers

your future is very bright.
Start your journey on your graduation.

Our Trainings & Partners



PNG UOT



Bishop Heber College



STAREX UNIVERSITY
GURUGRAM, INDIA



Tel: 303 1205 | 303 1270 | 303 1304 | 76110363 | 7236 9547 | 7266 2800

Email: dlc@datec.com.pg | learning@datec.com.pg

Website: www.datec.com.pg | www.papuanewguinea.newhorizons.com



**PAPUA NEW GUINEA
UNIVERSITY OF TECHNOLOGY**

Postgraduate Programs

Welcome to Study in Papua New Guinea and to study at the University of Technology in Lae, Morobe Province. The University of Technology (unitech) offers post graduate studies to international students as well as students from Papua New Guinea. The post graduate programs range from short courses, Masters and PhD. Below are the Post Graduate course programs offered by the university.

PhD Programs and Entry Requirements at PNG University of Technology

- Doctor of Philosophy (PhD -Research)
- Doctor of Philosophy in Agriculture
- Doctor of Philosophy in Applied Physics
- Doctor of Philosophy in Food Technology
- Doctor of Philosophy in Applied Chemistry
- Doctor of Philosophy in Architecture
- Doctor of Philosophy in Information Technology (IT)
- Doctor of Philosophy in Economics
- Doctor of Philosophy in Finance
- Doctor of Philosophy in Banking
- Doctor of Philosophy in Civil Engineering
- Doctor of Philosophy in Communication and Development Studies
- Doctor of Philosophy in Electrical and Communication Engineering
- Doctor of Philosophy in Forestry
- Doctor of Philosophy in Geomatics
- Doctor of Philosophy in Computer Science
- Doctor of Philosophy in Mathematics
- Doctor of Philosophy in Mechanical Engineering
- Doctor of Philosophy in Mining Engineering
- Doctor of Philosophy in Mineral Processing
- Doctor of Philosophy in Property Studies

Entry Requirements

An Application for admission to candidature for the degree of Doctor of Philosophy shall have a Master degree in a field of study related to the subject of the proposed research. Proven track record of research and working experiences are needed to apply for PhD. Candidates are strongly advised to contact the relevant department before submitting the application.

Masters Programs and Entry Requirements at PNG University of Technology

- Master of Philosophy (MPhil - Research)
- Master of Philosophy in Agriculture
- Master of Philosophy in Applied Physics
- Master of Philosophy in Food Technology
- Master of Philosophy in Applied Chemistry
- Master of Philosophy in Architecture
- Master of Philosophy in Economics
- Master of Philosophy in Finance
- Master of Philosophy in Banking
- Master of Philosophy in Electrical and Communication Engineering

The university provides a diverse range of academic programs, including 20 PhD programs, 34 Masters programs, 3 PG Diploma Programs, and 2 PG Certificate programs. Additionally, it also offers 3 Master's programs specifically designed for distance learning. The university is also introducing more programs in the distance and/or hybrid mode to increase student access. Currently, more than 136 students, including 24 PhD candidates, are registered in various PG programs at PNGUot.



- Master of Philosophy in Civil Engineering
- Master of Philosophy in Communication and Development Studies
- Master of Philosophy in Forestry
- Master of Philosophy in Information Technology
- Master of Philosophy in Mathematics
- Master of Philosophy in Computer Science
- Master of Philosophy in Mining Engineering
- Master of Philosophy in Mineral Processing
- Master of Philosophy in Geomatics
- Master of Philosophy in Property Studies
- Master of Philosophy in Surveying
- Master Program (Course- based)
- Executive Master of Business Administration (EMBA)
- Master of Business Administration (MBA)

Entry Requirements

An application for admission to candidature for the degree of Master of Philosophy (MPhil) shall have either:



- i. A Merit degree or Postgraduate Diploma from a tertiary institution approved by the Postgraduate Committee,
- ii. A Bachelor degree of Honors standard from a tertiary institution approved by the Postgraduate Studies, Research &

Innovation Committee

- iii. Relevant first degree with an industry experience of more than two years.

An application for admission to candidature for the Course based Executive

Master of Business Administration program shall have either;

- i. A completed Bachelor Degree in any field, OR

- ii. A minimum of five (5) years cumulative work experience in the public or private sector or both. In exceptional cases, running a successful own business may substitute for work experience.

Please pay your non-refundable application fee of K220 to the Unitech Trust Funds ACC #: 0011188172, KINA BANK, LAE.

APPLICATION OPENS NOW

How to Apply for Post Graduate Studies at the University of Technology in PNG

The application processes is online. Application for post graduates are open annually. Follow the instructions on the link published on the Unitech Website to apply online. Prepare all copies of your proposal, certificates, transcripts, two professional references, and other necessary documents before starting your online application. Follow the link below to apply online.

APPLY ONLINE NOW

For more information, visit the Unitech website: www.unitech.ac.pg or email: info.pgs@pnu.ac.pg
 Phone: 473 4280 / 473 4284 / 473 4456
 Application Due date : 28th July , 2024

Disclaimer : Please note that we do not represent the university or college stated in this post in anyway and we are not agent for them. We do not recruit, enroll or take questions. All graphics and information uploaded here are for general information and promotional purposes. Information may change overtime which this site may not update it.

Thus you are to consult their official website.

You be also interested in :

- PNG University of Technology Undergraduate Course Programs and Entry Requirements



UEL LOGO Competition Winner



Awal R. Kamane, a final (4th) year student from the school of Civil Engineering was amongst the many entries who submitted their artwork for the Logo competition that was held last year (2023). Mr Awal's masterpiece (artwork) was very much persuasive amongst all the other submitted artwork. The Board of Directors, Management and Executives of UEL group had no choice, but to select his logo as the UEL official business logo.

Mr Awal R. Kamane was awarded for his outstanding skills and creativity put into coming up with this masterpiece. He was being congratulate by UEL General Manager, Mr William Kep during the official presentation and launching of Unitech Enterprises Limited (UEL) Logo in front of the UEL Shop.

We are also pleased to notify that Mr Awal R. Kamane is going to be one of this year's (2024) 56th Unitech Graduates under the school of Civil Engineering.

On behalf of the UEL group we would like to congratulate Mr Kamane for his achievement today, and we wish him a successful career ahead.

His master piece (UEL Logo) has been our business identity, giving us confident to showcase our products/services within Unitech Campus as well as outside of the campus (Province wide), and is going our pride in the years to come.





The Unitech Rainforest Habitat

The Unitech Rainforest Habitat is a mini zoo located at Unitech (Taraka) Campus, that has a good selection of native animals, overgrown trees with lianas and ferns on the forest floor, beautiful BBQ and or picnic area inside the habitat and very quiet and attractive native vegetation.

The Habitat itself occupies 3000 Square Meters and houses a mix of animal and vegetation diversity all enclosed under a 11m-high canopy. Our goal as much as possible is to provide a conducive environment for sustainable operation, and to maintain the welfare of the habitants (plants and animals).

OUR GOAL

Committed to provide a conducive environment for sustainable operation.

OUR OBJECTIVE

Is to revitalize, develop and integrate the facilities, infrastructure and operational and include updating the visitor's hub, the animal operations Centre and Botanic Gardens.

OUR PURPOSE

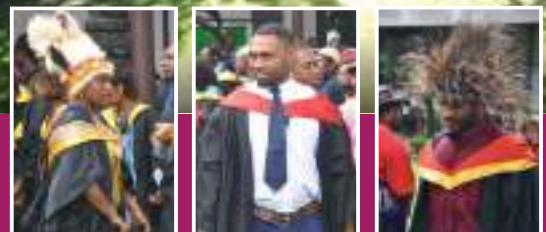
- Biological research
- Conservation of native genetic resources
- Environmental education
- Echo-tourism
- Insect farming and trading
- Native animals captive breeding zoo

As a custodian to this very significant asset, the University now recognized its importance and have made some investment in terms of financial assistance to cater for its renovations and maintenance around the vicinity of the facility. The Unitech Rainforest Habitat is a self-funded facility, meaning that all our daily operation depends entirely on Guest House that is up and running and the collections from the habitat zoo.

The Rainforest Guesthouse offers budget accommodation ideal for families, individuals and group bookings. It has fully equipped kitchen area, laundry facility and conference room.

Connecting People with Nature..”

Connecting people with nature and saving species from extinction is at the core of what we do. We aim to connect and conserve.



Unitech
Graduation
Day **Function**
 Area for HIRE..

- SPECIAL FUNCTIONAL AREA
- UNIQUELY SELECTION OF ANIMALS ON SITE
- BOTANICAL GARDEN
- GUEST HOUSE
- GIFT SHOP ETC.

PGK 450

Limited space available!

CALL US NOW AND BOOK THE VENUE

+675 7055 6090 | joseph.boi@uel.com.pg | www.uel.com.pg

CONGRATULATIONS

Mr. JOHN APE - Senior Chemist, Environment and QA/QC.

■ And propose sustainable solid waste management to safeguard and employ sustainable water resources management to uphold and maintain United Nations Sustainable Development Goal No.6 (UNSDG).

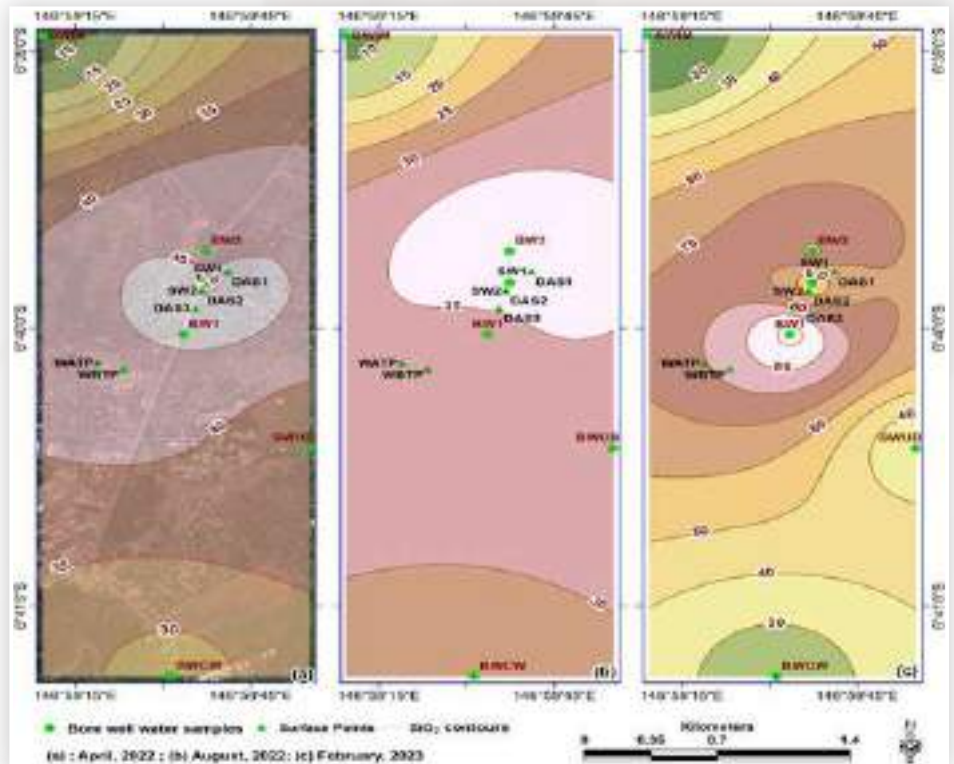
The investigation's conclusions led to the determination that leachate gradually seeps through the soil and contaminates the groundwater supply close to the open disposal site. The spatial interpolation below shows how contaminants are higher in the vicinity of the disposal site.

to the Lae City Communities and it will be shared to the appropriate authorities.

ACKNOWLEDGEMENTS:

The following people and organizations assisted in the success of this of the research and I note.

Associate Professor Dr. Srikanth Bathula, my mentor and supervisor, for providing me with the chance to participate in this research. Dr. Bathula's support and direction throughout the entire the research has been major factor



In line with University's strategic plan 2020-2024, UEL staff enrolled for post graduate programs in various academic department.

Mr. Ape is a senior chemist, responsible for quality assurance and control with the National Analytical and Testing Services (NATS) Laboratory who enrolled at the Applied Sciences Department in 2022 as a Master of Philosophy in Applied Chemistry Research Student.

An extract of his Thesis titled **"IMPACT ASSESSMENT OF LEACHATE DUE TO OPEN DUMP SITE ON GROUNDWATER QUALITIES"**.

Solid waste management is a problem in developing countries including Papua New Guinea (PNG). Managing municipal solid waste is a concern in Lae City, the industrial hub and second-biggest city in the country with the largest cargo port and a corridor to the highlands region. There are many instances reported where leachates from dumping site can accumulate at the bottom of the dumping site, percolates through soil and reach groundwater table.

The study hypothesized that microbial contaminants, toxic chemicals and heavy metals contaminants may be reached out and percolate through soils and pollute groundwater which is the source where water is abstracted, treated and distributed by Water PNG Limited through Lae city and the surrounding areas.

The purposes of the research were;

■ The study aimed to investigate the level of microbial, chemical and heavy metal contaminants due to the dumping of solid wastes near the vicinity of bore wells.

■ To foresee the impact of biological, physico-chemical and heavy metal contaminants and their health effect on

human beings.

In order to reduce environmental contamination, Lae City's open dumping sites and landfills must implement an efficient waste management program.

The study recommends sustainable solid waste management because a proper waste management system can protect the surrounding environment from pollution of groundwater.

Based on the study conducted in the study site, it is recommended that the Authorities,

■ Respond to contamination already in the ground.

■ Further establish the hazards that might contaminate the groundwater.

■ Immediate action is required to safeguard the bore wells and dump away from the bore wells.

■ Further investigation is recommended.

The research findings are very important

driving the successful completion of the research and the thesis.

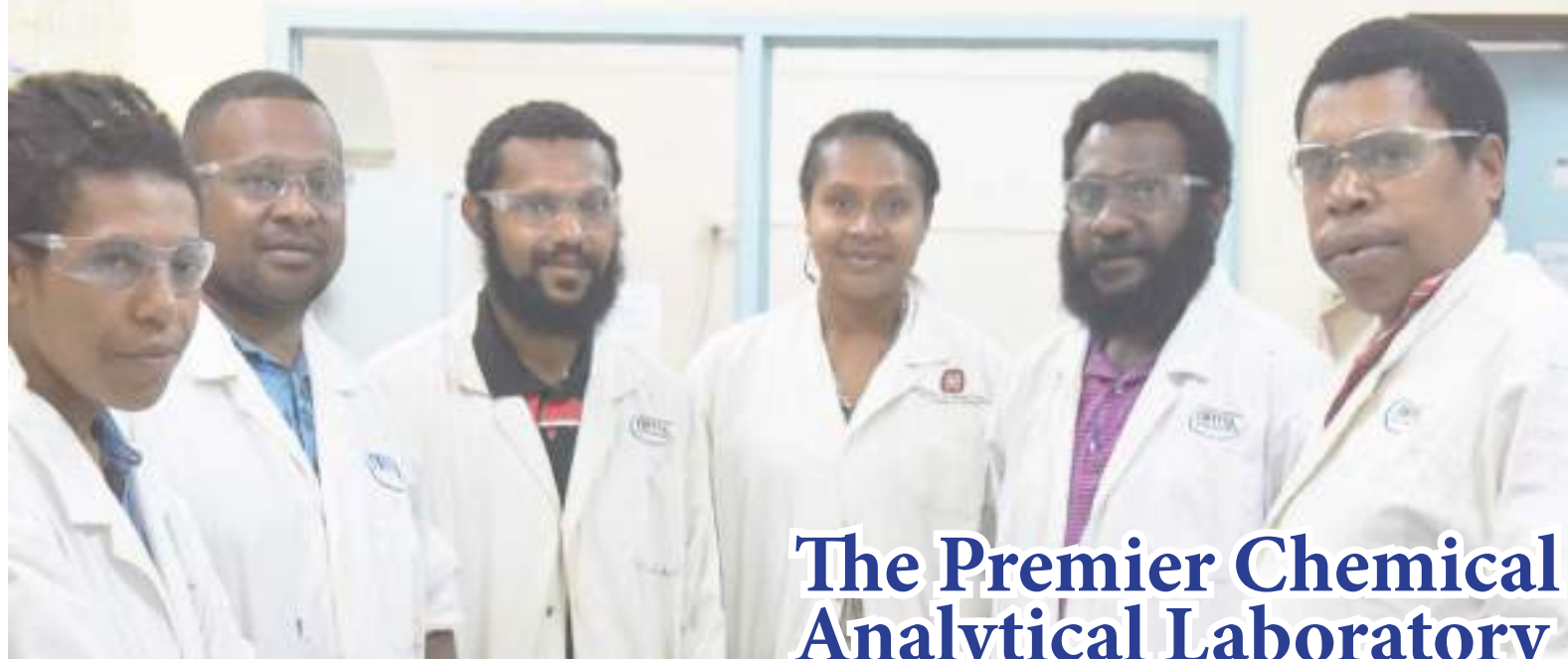
The PNG University of Technology Research Committee and the Applied Sciences Department for giving me the chance to enroll as a research student.

National Analytical & Testing Services (NATS) a business unit of Unitech Enterprises Limited for all of their helped with analytical testing.

Water PNG Limited and the CEO's office for allowing me accessed to the Taraka plant site and the Bore wells for the purpose of conducting research-related water sampling.

Associate Professor Sailesh Samanta of the Lands and Surveying Department at the PNG University of Technology for his help with processing spatial diagrams.

Chemists and management at the NATS for their support and encouragement to delivering the completion of the research project.



The Premier Chemical Analytical Laboratory in the Pacific Region.

National Analytical and Testing Services (NATS) under the leadership of Unitech Enterprises Limited (UEL) is a testing laboratory set up by the PNG University of Technology to provide testing services to PNG Community.

OUR COMPETENCY

Testing Services;

- Water
- Mine Tailings
- Environmental Waters
- Waste Waters
- Soil/ Sediment
- Food/Feeds
- Concrete/Aggregates
- Bio Tissue

Call-out Services;

- Field Sampling
- Environmental Audit
- Chemical Spill Investigation
- Laboratory Audit
- Environment Monitoring (Water Chemistry)

WHAT MAKES US DIFFERENT

- Biggest Testing scope; about 50 test methods
- Wide range of sample matrix
- Latest is Instrumental analysis; ICP MS

- Heavy Metal Testing
- Set Laboratory Quality System to reflect the requirements of ISO IEC 17025: 2005

OUR EXPERIENCES

- Being in the Lab Testing business for more than 30 years
- Huon Gulf water chemistry monitoring of Lae Tidal Basin activities
- Porgera Environmental Audit (Water Chemistry)
- Cyanide seepage/ leakage investigation
- Agility water quality monitoring
- Lae Nadzab Tomodachi International Airport Redevelopment; water quality monitoring
- Frabelle swab sampling
- Baseline setting of Huon Gulf sea water quality



“Cutting edge technology in Water Quality Analysis”

■ Water testing for a variety of matrices including:

- Sewage
- Industrial effluents and waste
- Drinking and Natural Waters

■ Variables include:

- Bacteriological testing
- Nutrients
- Cyanide and
- Drinking Water Quality
- Compliance tests

■ We also conduct testing for:

- Soil
- Agriculture
- Minerals
- Pathology
- Plants
- Food
- Environment
- Air quality



THEM
WATER FOR PEACE™

PH: 473 4571 | FAX: 473 4578 | 473 7667 | john.ape@uel.com.pg | andrew.hombo@uel.com.pg

natsl@uel.com.pg | www.uel.com.pg

A business group of UEL





Andrew Hombo
Laboratory Supervisor to
Chief Chemist

As chief Chemist, I ensure all laboratory operations are updated and functional.

Furthermore, Manager is the first point of contact with clients in service delivery and technical advice on laboratory testing related enquires. Chief Chemist represents NATS in its daily business. Chief chemist spear-heads a group of scientist in laboratory testing innovations and improvements to cope with latest trends in measurement science techniques, technology and demand".

Education Background:

- Bachelor of Science in Applied Science (PNG UoT)
- ISO IEC 17025 Laboratory Quality Management System (NATA)
- ISO IEC 17025 Laboratory Internal Audit (NATA)

Experience:

- 2009 to 2015 Analyst to Supervisor at NATS
- 2015 to 2016 Geochemist/Environment Specialist at MMJV – Environment Department
- 2017 to Current Laboratory Supervisor to Chief Chemist at NATS



Vincent Koddy

Retired Chief Chemist
(Lab Manager)

After a very long years of service with NATS since 1982, Mr Koddy successfully retired last year 2023 (41 years) as Chief Chemist & Laboratory Manager.

Education Background:

- Bachelor of Science in Food Technology (PNG UoT)

Achievements:

- Quality assessment of hermetically sealed food products (University of New South Wales, Australia)
- Advance Food Microbiology (University of Surrey, United Kingdom)
- Quality Management in the Laboratory (NISIT)
- Pollution Control and Management and Environment Toxicology (Asian Institute of Technology, Bangkok)
- ISO 17025 An Introduction to the Laboratory Accreditation Requirements (NATA)
- Laboratory Internal Audits (NATA)

A NEWLY PROPOSED STATE-OF-THE-ART NATS LABORATORY



The National Analytical & Testing Services (“NATS”) is a business unit of the Unitech Enterprises Limited; a business arm of the Papua New Guinea University of Technology (“Unitech”).

NATS is a laboratory that aims to provide comprehensive and high-quality testing services to mining, petroleum, agriculture, fisheries, government, medical professionals, research institutions, and individuals. Our mission is to contribute to the advancement of industries in Papua New Guinea by delivering accurate and timely laboratory testing results. With a commitment to innovation, precision, and customer satisfaction, NATS is a trusted partner in the industry and the community.

The facilities and the buildings that houses the NATS were built in the 1985. To keep up with the demands of the industries, government and the community the NATS requires a new state of the art modern laboratory building, fully equipped and staffed. A design was already done and the total cost of this proposed project is K20,000,000.

This proposal has been put forward to relevant partners for funding.

Overall, investing in chemical and biological laboratories can have significant long-term economic benefits by fostering innovation, supporting industries, creating jobs, attracting investment and talent, generating intellectual property, advancing healthcare, and promoting environmental sustainability. NATS State of the Art Laboratory is paramount to the advancement of the Country’s development aspirations.

NATS, the largest laboratory in Papua New Guinea and the Pacific of its kind, stands to support Papua New Guinea achieve its medium term development goals and the vision 2050.

Current Clients:



Ruth Igubi
Microbiologist,

A 29 years of age from Madang Province. She is been working with NATS for 4 years as Microbiologist, after completing her Diploma In Applied Science at the National Polytechnical Institute of PNG.



Kova Garrison
General Water’s
Supervisor &
Environment

A 32 years old Eastern Highlander, has 5 years of experience with NATS, after completing his Bachelor’s Degree in Applied Chemistry at PNG University of Technology in 2018.

13 Academic Departments collaborating with Unitech Development and Consultancy (UDC) to offer training and consultancy services to external clients.

1. Forestry Department

- Collaborates with other departments to provide consultancy on forest inventory assessments, land use planning, and reforestation initiatives tailored to mining rehabilitation needs.
- Participates in joint training programs on sustainable forestry practices in mining areas with other departments.

2. Agriculture Department

- Offers consultancy services on agricultural land assessments, crop yield optimization strategies, and organic farming practices for mine site reclamation in collaboration with other departments.
- Contributes to joint training workshops on soil fertility management, crop diversification, and agricultural technology adoption for mining-related agriculture.

3. Applied Science Department

- Provides expert water quality assessments, mineral exploration support, and environmental impact assessments in partnership with other departments.
- Collaborates on training programs for mineral analysis, environmental monitoring, and comprehensive impact assessments in the mining industry.

4. Mining Engineering Department

- Offers tailored mine design consultancy, safety audits, and rock mechanics advice in collaboration with other departments.
- Participates in joint training sessions on mine planning, rock mechanics principles, and safety protocols for mining operations.

5. Electrical and Communication Engineering Department

- Provides expert electrical system design, automation support, and communication infrastructure planning in partnership with other departments.
- Participates in joint training courses on power systems design, automation solutions, and communication network implementation for mining sites.

6. Mechanical Engineering Department

- Collaborates on equipment selection, maintenance strategies, and energy efficiency audits with other departments.
- Contributes to workshops on equipment maintenance, industrial machinery design, and mining equipment efficiency improvement.

7. Applied Physics Department

- Offers material analysis, process control solutions, and physical modeling services in collaboration with other departments.
- Participates in advanced training on material testing, industrial process analysis, and physical modeling for mining operations.

8. Mathematics & Computer Science Department

- Collaborates on data analytics, numerical simulations, and software development tailored to mining applications with other departments.
- Contributes to training programs on data analysis techniques, numerical modeling, and software development for mining systems.

9. Surveying & Land Studies Department

- Provides topographic surveys, land boundary delineation, and spatial data analysis in partnership with other departments.
- Participates in hands-on training on surveying techniques, GIS applications, and land mapping for resource management in mining areas.

10. Civil Engineering Department

- Collaborates on customized consultancy services for mine site infrastructure development, land reclamation planning, and

environmental monitoring with other departments.

- Contributes to training programs on infrastructure design, geotechnical engineering, and construction management in the mining sector.



11. Communication & Development Studies Department

- Collaborates on community consultation, social impact assessments, and sustainable community programs for mining projects with other departments.
- Contributes to workshops on community engagement, social impact assessments, and stakeholder management for sustainable community relations.

12. Business Studies Department

- Offers business planning, financial analysis, and project management support for mining projects in collaboration with other departments.
- Participates in comprehensive project management courses, financial analysis workshops, and strategic planning guidance for sustainable growth in mining operations.

13. Architecture and Building Department

- Collaborates on facility design consultancy, construction management, and architectural planning for mining operations with other departments.
- Contributes to training programs on infrastructure design, construction management, and architectural design for industrial and mining structures.

Utilizing the expertise and resources of these 13 academic departments through a University Development Center (UDC), the university can offer a comprehensive range of training and consultancy services to meet the diverse needs of external clients, industry partners, and the community.

This collaborative approach can enhance the university's impact and contribute to sustainable development in the mining and related industries.



■ Eco-Mics Coach Mr Nobel Towe (White T-Shirt) posing with UEL General Manager Mr William Kep. Mr Nobel Towe is also one of the final year (4) student taking Bachelor of Business Management. He will be graduating this year on the 05th of April 2024.

ECONOMICS 2023



Rugby Football League GRAND FINALIST.

As outlined in our vision statement...
“We operate to financially support the PNG University of Technology in this twenty-first century.”

UEL is proud to partner with the Economics students Rugby Football League Club as their major sponsor. UEL is looking forward to continue supporting the club with merchandises and other things in this year 2024, and onward.

The boys have proven their worth when they took on the 2023 Grand finalist title last year.

And as a major sponsor of Economics students Rugby Football League Club, UEL is proud that the boys have proven their investment and is worth the corse.

We (“UEL”) would like to commend Mr Hila Doa (Full Back) for his outstanding performance last year (2023). His leadership skills and bravery in this though time has greatly rewarded the team as the 2023 Grand finalist, and we would like to see more of this from the boys and we look forward to maintain our sponsorship this year 2024 and on.



Above: The UEL Shop Manager Ms Karen Solien, Hila Doa (Full Back) and Nobel Towe (Coach) during the official presentation of the club's T-shirts in preparation towards their function night last year 2023. Top: The Team during their training session last year.

COMFORTABLE & BUDGET ROOM FOR SMART PEOPLE LIKE YOU

#SINGLE ROOM K180.00 /night	■ Single Room	K 180.00	MISCELLANIOUS: Laundry (Washing machine & ironing) PGK 20.00 / load
	■ Family (2 adults & 2 children)	K 300.00	
	■ Deluxe Double Room	K 300.00	
	■ Deluxe Family Room (Self contained)	K 350.00	

We also provide Quality catering services... **Breakfast K25 | Lunch K35 | Dinner K45**



+675 7055 6090 | joseph.boi@uel.com.pg | www.uel.com.pg

A part of UEL group



UNITECH

DEVELOPMENT & CONSULTANCY LTD

ENTREPRENEURSHIP CENTRE...

Our Short Courses



- Roles of Company Directors
- Business Ethics and Governance
- Purchasing and Inventory Management
- Accounting for Non-Accountants
- Accounting for Payroll
- Introduction to Taxation
- Financial Literacy
- Office/ Productivity Applications
- Book Keeping using Microsoft Excel
- Digital Literacy
- Database Design using Microsoft Access
- Project Management using Project Management Software
- Microsoft Excel Intermediate Level
- Microsoft Excel Advance Level
- Business Idea Development Process
- e-commerce in PNG: Identifying and Strengthening the Enablers of e-commerce
- Marketing Management Skills For Marketing Professionals
- Logistics and Supply Chain Management
- Operations and Production Management
- Developing and Managing a Small Business
- Quality Customer Service
- Customer Relationship Management
- Change Management Skills for Managers
- Delegation and Time Management
- Frontline Management
- Contract Law
- Business Valuation and Analysis
- Studying and Interpreting Financial Reports by Non-Financial/ Accounting professionals
- Intellectual Capital and Knowledge Management
- Electronic Markets

The schedule for facilitating short courses at customers

location: Upon agreement we can schedule and deliver short courses at any customer locations anytime around PNG.

**# SHORT COURSES for
working class Professionals**

Nov.2024
to
Feb.2025

Visit our website
today for bookings,
quotations
and enquiries.

www.uel.com.pg

Call us on: +675 7055 6090



Apply Now!

JRA LIMITED

DESIGN, BUILDING, CIVIL & SURVEYING



Empowering Growth: JRA Limited's Journey in Construction Excellence

Established in 2018, JRA LTD has emerged as a beacon of innovation and reliability in Papua New Guinea's construction industry. With a comprehensive range of services spanning design, surveying, civil engineering, building construction, and project management, JRA stands as a testament to expertise, commitment, and local empowerment.

At the heart of JRA's ethos lies a dedication to integrity, competence, and community care. As a 100% PNG-owned and operated entity, we bring over 30 years of combined local and international experience to every project we undertake. Our vision is to ascend as the nation's premier construction company, driven by a steadfast commitment to our core values.



JRA's mission is clear: to deliver projects safely, on time, and within budget, enriching the lives of our customers, shareholders, employees, and communities. We prioritize ethical business practices, gender equity, inclusiveness, and child protection in all our endeavors. With a strategic focus on safety, quality, and environmental sustainability, we strive to build enduring partnerships and achieve excellence in every aspect of our operations.

JRA LIMITED SPECIALIZE IN

**ARCHITECTURAL DESIGNS
BUILDING CONSTRUCTION
PROJECT MANAGEMENT
SURVEYING
CIVIL ENGINEERING
DESIGNS &
CONSTRUCTIONS**

As JRA LTD continues to evolve and expand its horizons, we remain steadfast in our commitment to excellence, innovation, and community stewardship. With a legacy built on integrity, expertise, and social responsibility, we embark on each project with a singular focus: to empower growth, enrich lives, and build a brighter tomorrow for Papua New Guinea.

JRA LIMITED PROJECTS

AUSAID/UNIOPS - Survey Milne Bay Electrification Program.

Architectural Design and Engineering, AROB - 14 storey building.

Engineering Design & Survey 65km, K65m - Enga-Sepik Highway.

Engineering Design including Survey-K1.2b Project Cost Estimate - Hela Military Barracks Papua New Guinea Defence Force (PNG DF).

Design and Construction, National Fisheries Authority (NFA) - Cold Storage Huon Gulf & Finschafen, Morobe Province K6m.

Design & Construct Kimbe Housing Scheme - PNG Ports Ltd.

Architectural Design and Engineering, Survey, and Geotech. Wabag District DDA Office & Library

JRA SUBSIDIARIES

JRA TRAVEL
For your travel convenience

[f JRA TRAVEL](#) [@ JRA TRAVEL](#)

Introducing JRA Travel, a dynamic subsidiary of JRA Limited established in 2021.

JRA TRAVEL SERVICES

- AIRLINE TICKETING SALES
- ACCOMODATION BOOKING
- TRAVEL ACCOUNT (BUSINESS & PERSONAL ENTITLEMENT)
- HIRE CAR RESEVATION
- GROUP TRAVEL
- LEAVE ENTITLEMENTS
- TRAVEL INSURANCE COVER
- VISA & PNG PASSPORT LODGMENTS
- IPA AND IRC LODGMENTS

ASIS
PHARMACEUTICAL & DISTRIBUTORS LTD

Oasis is a pharmaceutical importer, wholesales and distribution company in Papua New Guinea. We have accumulated skills, expertise and experiences in sourcing, procuring, importing and distributing pharmaceutical drugs and medical equipment throughout the country.



ASIS Warehouse opening at 6 mile